

Winter InDownton

Moot Consultation on Fencing

The decision to erect a temporary fence on the bridge in the Moot because of concerns about safety has caused controversy. Many villagers took to Facebook to express their anger at the changes, and to question whether such an action was necessary. The Moot Trustees have decided to consult the public on the way forward.



The trustees write: "It is a priority of The Moot Trustees that access is safe for all users of The Moot. The Moot is intended to be open to the public 24 hours a day and is frequented by members of the public day and night. The Moot bridge is one of the main thoroughfares and access points to The Moot grounds and as many will know it is a bridge without sides. There has been some concern that despite the structure apparently never having given rise to any mishaps, there is nonetheless some risk of injury to users of The Moot. The use of The Moot by unaccompanied children, those less able, and a general increase in the use of The Moot have led the Trustees to consider whether the current structure poses a level of risk that should be mitigated by the introduction of railings or other protection to the sides of the bridge."

The trustees accept that most people (including the Trustees) want no change to the structure. However, having taken professional advice, there is a concern that the current structure may present an unacceptable risk. The consultation is seeking the views of members of the public and in particular users of The Moot concerning a potential change to the Bridge. The Trustees are also consulting with insurers, planning authorities, English Heritage and others. Members of the public can submit written comments by Friday 28 February. Written evidence from other sources and pictures can be attached. The trustees are also seeking views on the type of structure that people would like to see, should it be deemed that change is necessary. They add "whilst every effort will be made to follow up on all comments it may not be possible to obtain professional advice on all matters if the cost is prohibitive."

Comments and attachments should be submitted by email to chairmanofthemoot@gmail.com or sent to Chairman of the Moot, Hazelacre, Slab Lane, Downton, SP5 3PT. Please indicate how often you have visited The Moot in the last twelve months and what you see as its most valuable contribution to the community. More information at downtonmoot.co.uk.

Comment

If it's not too late, can we wish you a Happy New Year?

The newsletter continues to enjoy good support, and we're very grateful to everyone who helps including those that deliver the newsletter to every house in the village. We are currently short of a volunteer to deliver to Saxonhurst. If you can help deliver the newsletter over a weekend five times a year, please get in touch by calling 513191 or by email, editor@indownton.org.uk.

There's lots of ideas for volunteering to help our village in this issue including visiting Ashley Grange or becoming a Parish Councillor. Could you start something new this year?

Finally, we had late news on the future of The White Horse. See the article on page 2.

The Editor

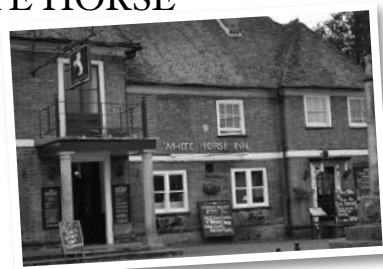


NEW TENANTS AND A NEW NAME FOR WHITE HORSE

The White Horse is being taken over by new tenants on a twenty year lease from Enterprise Inns. It will be renamed 'The Goat at Downton' and launched as a gastro pub in early April. In the intervening weeks, improvements will be made to the interior and to kitchen and storage areas - in line with plans outlined in planning applications submitted and approved last year.

The stables will be made over to dining, but a bar and drinking area (with beer, including local brews) will be retained at the front of the pub. The field at the rear is expected to be turned into a car park. The new owners (a partnership of two experienced restaurateurs)

are excited about the prospect of coming to Downton and have already got a chef and team lined up. They will be talking to representatives of the Downton Society about their plans - in particular changes to the listed building - but have confirmed that the change of name is non-negotiable as they are working to a business model and identity proven to be very successful in Romsey.



NEW LIBRARY EVENTS FOR YOUNG AND OLD

Downton Library is set to host some new events this year. A group called 'Old Time Favourites' is already up and running. Meeting on a Monday afternoon, from 2 - 3:30pm, it provides an opportunity for people to meet up with others to share favourite poems and books, but also to chat and make friends. Refreshments are available. The first session took place on 13 January, and further sessions will take place weekly. Do make a note of the dates, and come along if you are able - everyone is welcome.

Rhymetime for the youngest members of the community starts on January 28 and will run for three sessions on Tuesday afternoons - and

maybe more, depending on demand. Starting at 2pm, and aimed at children aged 0 - 4 years and their parents / carers, there will be half an hour of nursery rhymes, action rhymes and songs to join in with. You don't need to be a member of the library to come - although you might want to join when you see the variety of wonderful books that you can borrow for your children to enjoy!

For more information on both these events, contact the library on 511003.



Would you like to **store** your surplus
solar energy and save money?

With **ecoenergysave**
YOU CAN!

Solar panel (PV) implementations
Solar panel (PV) with **battery backup** solutions
Battery storage solutions in conjunction with **Economy 7** (without Solar PV)
Get in touch today for a **FREE** quote

01722 448276
info@ecoenergysave.co.uk
ecoenergysave.co.uk

clubbercise
BRINGING A NIGHT OUT TO YOUR WORKOUT

MONDAY DOWNTON MEMORIAL HALL 7-9PM £5
TUESDAY BREAMORE HULSE HALL 8:30-10:30AM
£5 (TERM TIME ONLY)
TUESDAY FORDINGBRIDGE TOWN HALL 6:30-7:30PM
£5
THURSDAY BREAMORE HULSE HALL 6-6:45PM £5
THURSDAY DOWNTON MEMORIAL HALL
7:20-8:05PM £5 CLUB BUMS & TUMS (LBT)

TO BOOK OR MORE INFO GO TO: **FACEBOOK.COM/CLUBBERCISEPENNY**
CLUBBERCISEPENNY@YAHOO.COM
07741255646

PLASTIC FREE DOWNTON

As reported in the last issue of InDownton, the green group and the Parish Council are working together to obtain 'Plastic Free' status for the village. A working group is being organised, and the first meeting will be on Wednesday 22 January at 6:30pm at the Memorial Centre. The campaign will rely on community involvement, so anyone who would like to support the initiative is encouraged to come. The group will be looking at minimising the use of plastic by individuals, organisations and businesses, and plans are already in place to

consult with a wide variety of people across the village on how best to work together to achieve this aim. Much is happening already, but there is more to be done.

If you are interested, but unable to make the meeting, then contact the Green Group - either via their Facebook page / at contact@downtongreengroup.org.uk / or ring 513191.



COMMUNITY PRE-SCHOOL

There are still some spaces available at the Pre School, so if you are considering this setting for your child – either now or in the future - and would like to know more, then contact them on 511178 to arrange a visit. All parents and their children are very welcome to come and see what is on offer. Three new children and their families have already started this term.

Topics for this term are the Arctic, Polar Animals, Northern lights and celebrating Chinese New year. As well as making crafts based on these topics the children will also try some traditional Chinese food.



ANNE OF GREEN GABLES

There will be a performance of Anne of Green Gables in the Baptist Church on Saturday March 28 and on Thursday April 2 at 7 pm. This

is a classic story for adults and older children based on the Canadian novel by L. M. Montgomery, which was first published in 1908. Tickets on

the door £5 including a drink. Proceeds, if any, will go to Downton4Family.

PETER COX
PAINTER & DECORATOR



ALL ASPECTS OF DECORATING WORK
UNDERTAKEN AT A COMPETITIVE PRICE.
EST. SINCE 1986

MOBILE TEL NO. 07932015658
EMAIL: coxpeter7@hotmail.co.uk

Downton Butchery
High Class Family Butchers

*Free range & local meats,
poultry & game*



64 The Bourough
Downton
Salisbury, SP5 3LY

Tel: 01725513111
www.facebook.com/downtonbutchery

BIG FIX 2020 FOR REPAIR CAFÉ

The Lover Repair Café (at Redlynch Village Hall) is taking part in the Big Fix 2020 on Wednesday 12 February, a nationwide day of repair events, when it will be open as usual. The team covers a wide range of skills and will have a go at repairing most domestic items. They also offer a recycling service for items which can't be repaired. You can drop in and have a coffee whilst the team assess how to repair your item. There is no charge for the service, unless parts need to be ordered, in which case you will be asked to pay the cost of these. They do, however, accept donations and over the time that they have been operating, have

been able to give a substantial amount of money to local charities. The café is open every Wednesday 10-12pm. There are plans to trial opening on selected Saturdays in the Spring to enable more people to access the repair and recycling service. More information from loverrepaircafe@gmail.com



BACK TO THE 1920S

The early 1920s conjures up images of flappers, silent movies and prohibition in the USA. One hundred years later the Moot and the Memorial Centre are jointly holding what promises to be an exciting and fun filled evening to celebrate on Saturday 14 March. In true roaring 20s style you will be entertained by Suite Jazz and a Barbershop Quartet and be provided with a 3 course meal, cooked by the Borough Café. Other entertainment will include a

themed quiz and a chance to learn to dance the Charleston. And there will be other surprises too. You are asked to come in costume of the era - black tie is an option for men. Tickets are £25, available from the Borough Café from mid February. For more information go to downtonmoot.co.uk or downtonmemorialcentre.co.uk or phone Pennie on 07803 721585 or Hilary on 07760 415818.

DOWNTON IN BLOOM 2020

Preparations are building towards the competition - it is thought that the likely judging date will be in early July, and a pony and trap has been organised to transport the judges to the Moot. The topiary cuckoo has been ordered and will be situated opposite the Memorial Hall. There will be new tubs and planters for the Borough, sponsored by the

Parish Council, and discount prices for hanging baskets in the Borough. Further plans will be published in the next issue - watch this space!

Further information on the Downton in Bloom Facebook page, visit thedowntonsociety.org or email downtoninbloom@gmail.com



GREEN FINGER SOLUTIONS LTD


**Green Finger Solutions
Grounds Maintenance &
Arboricultural Specialists**

Contact Charlie for a free quote for tree, woodland, garden and landscaping projects.
Fully insured.

Telephone: 01725 511024
Mobile: 07585 002876
info@greenfingersolutions.co.uk
[Web: greenfingersolutions.co.uk](http://greenfingersolutions.co.uk)

Sampson Coward SOLICITORS 25 years of legal excellence

- Family
- Employment
- Litigation & Disputes
- Property
- Wills & Probate



St Mary's Chambers, 51 New Street, Salisbury SP1 2PH
t: 01722 410664 e: mail@sampsoncoward.co.uk w: sampsoncoward.co.uk

POST OFFICE VAN SERVICE

The Post Office van is now visiting the village on Fridays between 9am and 10am in Moot Lane and between 10.15am and 11.15am at The Bull. As well as handling post, it provides

banking services on behalf of all high street banks, many bill payments, phone top-ups, car tax renewals and foreign currency exchange.



DOWNTON UKULELE BAND

Did you know that Downton now has a ukulele club? It meets on alternate Tuesday evenings from 7-8:30 pm at the Baptist Church. Initially started to promote and support the Ukulele Club at the Primary School, it has turned into a small group of mixed ability players, who play a mix of music from various genres and decades. They have a few spare instruments and would welcome more members:

people who can play, those who would like to learn, singers - or anyone who wants to know more.

If you are interested you can go along to a practice - the next few dates are 28 January, 11 & 25 February. Alternatively contact the Downton Ukulele Club Facebook page or email Downton.Ukulele.Club@outlook.com

MEMORIAL CENTRE

Downton's Memorial hall is set to have a new look this January with the painting of the hall, kitchen area and lobby. There will be an open day on Saturday 25 January from 10am - 2pm. This is a chance to come and see the newly decorated areas and to get a taster of the variety of events and classes that take place.

Over £600 was raised at the successful New Year's Eve party and this money will go towards a drop down screen for the hall. Plans are already being made for a repeat performance this year.

The small committee which keeps the centre running and takes the bookings would appreciate some more committee members / trustees to share some of the work. Contact the



Soul Conspiracy play in the Memorial Hall on New Year's Eve

Chairman Susan Barnhurst-Davies at susankirsten@btinternet.com for further details.

INSPIRE

WINDOW CLEANING

Friendly, reliable window cleaning in Downton and surrounding areas

**Window Cleaning
Gutter Cleaning & Cleaning
Soffit & Fascia Cleaning
and more...**

Contact Steve Beament to book an appointment or get a **free quote**

inspirewindowcleaning@gmail.com
t: 07716 394721

Find us on Facebook

RDAVERY

COMPLETE VEHICLE CARE

Call us: 01794 323296

Your *local* garage for Car, Van & HGV

MOT CENTRE

CLASS 4, 5 & 7

ALL CLASSES OF CAR AND LIGHT COMMERCIAL

JOIN OUR TEAM

CAR & HGV TECHNICIANS
REQUIRED
CALL TO APPLY

Call 01794 323296 or email hello@rdavery.com to book
New Road, Landford, SP5 2AZ

VOLUNTEER TO VISIT ASHLEY GRANGE RESIDENTS

Care Home Volunteers is a local charity which recruits, trains and supports volunteers who spend quality time with older residents in care homes. They are looking for volunteers in Downton, to offer friendly conversation and companionship to residents at Ashley Grange, especially those who do not have regular visits from friends and family - helping them to keep in touch with the outside world, sharing interests and giving them an opportunity to reminisce about the good old days.

Kate Brooks, Volunteer Coordinator for Salisbury, said, "We're often told by care home

residents what a difference our volunteers have made and we'd love to welcome more

volunteers to our friendly team. If you can spare an hour or two a week please do get in touch. Kate will be in Downton in the coming weeks to talk to people about the charity's work. To find out more email Kate at kateb@carehomevolunteers.org.uk or call 07931 022824. There's a short video about the charity at carehomevolunteers.org.uk.



Ashley Grange Care Home

TIME FOR CARERS APPEAL

The Carer Support Wiltshire charity supports unpaid carers and is currently running an appeal to raise £30,000 to spend on carers. They are looking for local groups and individuals who would like to help fundraise for the Time for Carers Appeal. That could be by holding an event like a raffle or auction, asking for donations at a quiz or bingo night or taking part in a sponsored run or swim. There are an estimated 47,500 carers in Wiltshire. A carer is anyone who cares, unpaid, for a family member or friend who could not always manage without their support. They might look after someone with a physical disability, long term health

condition, mental health issue or a problem with substance misuse. It can be an incredibly rewarding thing to do for someone, but can take its toll as well. 40% of carers say they haven't had a day off in over a year, while 25% haven't had a day off in over five years. The effect of not getting a rest from caring is shattering, with carers describing being close to breaking point, desperate for some time to themselves, to sleep, recuperate and see friends and family.

To help the appeal and get involved can find out more phone 01380 871690 or email fundraising@carersupportwiltshire.co.uk. There is also a Time for Carers JustGiving page.

ART GROUP SUPPORTS DOWNTON4FAMILY

The Wednesday Morning Art Group would like to thank all those who supported them at their recent Annual Exhibition days in the

Memorial Hall. Despite being up against an international Rugby match and very wet weather, both days were well attended. As a

result, the group was able to donate £300 to Downton4Family.

Redlynch Village Hall
invite you to an evening of

Real Ale Tasting

courtesy of Downton Brewery

Saturday 7th March 7.30pm - 10.30pm
Ploughman's Supper, Ale Bar, Music
and Raffle

£10 in advance including beer
tasting and supper.

Telephone: Jane 512088

Over 18s only, ID may be requested



✉ rod@newbournecompost.co.uk
☎ 01725 518673 or 07896 544197
🌐 www.newbournecompost.co.uk

Looking for a Green Waste Disposal site?

Excellent quality screened topsoil

Landscaping compost for domestic or commercial
use

Delivery service for bulk bags or loose loads

DPSA FUNDRAISER

Downton Primary School are holding an evening fundraiser on Saturday 8th February to raise funds towards buying new play equipment for the adventure garden.

The local band, Pere Pierre, will be performing live. The DPSA will not be selling food or drinks on the night but instead welcome you to bring whatever food and drink you fancy along with you. It could be take-away, fish and chips, nibbly bits or even a three course dinner! There will be an opportunity earlier in the day to come in and decorate your table if you wish too. Everyone is welcome.

There will also be a cash prize raffle during the evening with tickets on sale on the night.



Pere Pierre performing at The White Horse

Tables seat 8 and cost £80 and bookings are on a first come, first served basis. More info on how to book will be on the DPSA Facebook page.

VOLUNTEERS NEEDED TO HELP AT DOWNTON LIBRARY

Downton Library is currently looking for extra volunteers to get involved. Community Library Volunteers help to extend the library's opening hours with three volunteer led sessions on Tuesdays 2 – 5 pm, Wednesdays 2 – 5pm and Thursdays 1 – 5 pm. This is an interesting role for those who enjoy meeting people of all ages and have a love of books and reading. Volunteers provide a friendly welcome to all visitors and assist them with using the library services. This includes dealing with straightforward enquiries;

assisting with the self-service machines; shelving the stock and helping customers to log onto the public access computers.

The library is looking for volunteers who can be flexible about their availability and are able to do a minimum of two sessions per month. Volunteer sessions normally last between 2 -3 hours and are on Tuesday, Wednesday and Thursday afternoons. For further details contact Jane Hunt either on 01225 713792 or by email at jane.hunt@wiltshire.gov.uk

LYNN PURCELL OPEN HOUSING RESULT

Lynn Purcell wishes to thank all the people who supported her successful Seasonal Open House


weekend at The Corn Mill and especially thank them for their generosity as nearly £190 was raised for The Breast Care

Unit at Salisbury Hospital from the tea/coffee/cake that was served.

Jenny G's Tuition Tree

English and Maths 1:1 home tuition

Key Stage 1 • Key Stage 2 • 11+ • SATS • 'Catch-up'



Jenny Giddings
Tel: 07796 979675
Email: jennygstuitiontree.com@outlook.com
Website: www.jennygstuitiontree.com

'Sowing seeds for success'

Confidence-building • Extension • Support • Test preparation

Hm&G

Working with **GARRISON GARDENERS**

All aspects of garden & groundwork undertaken...

- Grass Cutting • Regular Maintenance • One-off Seasonal Tidy-ups
- Landscaping • Hedge & Tree Care • Fence Erecting/Repairs
- Pressure Washing • Weed Control

Fully insured, Safecontractor registered and upper tier waste carrier.

Contact the team on: **01722 346 949** Text on: **07881 378 600**
email: info@hmandg.co.uk www.hmandg.co.uk



SATURDAY NIGHT MOVIES AT THE MEMORIAL HALL

On 18 January 'Yesterday' (12A) is a comedy starring Himesh Patel as Jack Malik as a struggling singer-songwriter in a tiny English seaside town whose dreams of fame are rapidly fading. After a freak bus accident during a mysterious global blackout, Jack wakes up to discover that The Beatles have never existed.

In 'The Good Liar' (15) on 15 February, Ian McKellen and Helen Mirren star as a veteran conman and a chintzy widow in a sparky drama steeped in deception.

On 21 March 'Official Secrets' (15) is based on world-shaking true events, telling the story of Katharine Gun (Keira Knightley), a British intelligence specialist whose job involves routine handling of classified information. Unable to stand by and watch the world be rushed into an illegal war, Gun makes the gut-wrenching decision to defy her government and leak the memo to the press.

April's movie on Saturday 18th is 'Knives Out' (12A), more details in the next issue.

Films start at 7.30pm and fans are invited to bring a cushion and cash for delicious ice creams and tea/coffee. The movie nights rely on support to keep the tradition of cinema coming to the community going. Tickets are increasing to £7 from January as the fees for the films is increasing. The ice creams are £1 each, to help raise funds for the new electric drop down screen.

For further details please contact Susan 01725 512963 or susankirsten@btinternet.com



Mirren and McKellen in February's movie, The Good Liar

DOWNTON BAND NEWS

Downton Band had a successful Christmas playing carols around the village and at various concerts across the area, ending in the traditional Christmas Day carols from 4am.

Downton Training Band are playing in the Wessex Brass Band Association annual Training Band contest in Downton on 25 January, and the Main Band will be making the annual pilgrimage to Torquay on 14 March for the South West regional qualifying contest which is part of the National Brass Band Championships.

Downton training band member, Sophie O'Sullivan (aged 12), a pupil at Trafalgar School, has been busy raising funds for the band. She

decided to do a sponsored swim and completed 844 lengths, the equivalent of half a marathon - swimming at Ringwood and Totton swimming pools over a period of 8 days. As a result, she collected £370 for band funds. Putting on a concert often costs about £350 so Sophie has single handedly sorted the next one! The band are all really proud of her efforts.



Sophie O'Sullivan

Clare Kaye Bookkeeping

Bookkeeping, VAT and Tax Returns



TLC Totally Living Care

Totally Living Care are now working in your area, we are recruiting home carers to look after your local clients in their own homes. Car is a necessity due to the geographical area.

Are you interested in joining an amazing team of carers, we offer :-

- Great wages
- Guaranteed hours in a very secure company.
- Bonuses based on experience
- Carer of the month recognition
- Work based pension
- Full training given, you do not even need any qualifications to start!

Call us on 01722567356 or go to our online application form at www.totallylivingcare.co.uk

LENT AT DOWNTON CHURCHES

The village churches are running lunches on five Wednesdays in Lent at the Downton Memorial Hall. Downton Churches Together will be serving a simple meal from 12.30pm on Wednesdays 4, 11, 18, 25 March and 1 April. There will be no charge.

Whether you come to meet friends, or come alone, you can be assured the warmest of welcomes. The lunches will be hosted by The Good Shepherd Catholic Church, St Laurence Church and Downton Baptist Church.

Two Lent courses are running in the village this year. A four week course takes place at Downton Baptist Church on Sunday evenings from 6:30 –

7.30pm, on the first four Sundays in March, beginning on March 1.

For more information contact 512971.

There is also a course at St Laurence Church, entitled “Explore the Big Story”. This course is also weekly, on Wednesday afternoons from 3:00 – 4:30, and will be held at the Vicarage, Barford Lane. It starts on March 4. For more details see February’s Parish News, visit stlaurencedownton.co.uk or look on the church’s Facebook site.



MOOT QUIZ EVENING

Hold the date for the Talk and Quiz evening on Friday 3 April in the Memorial Hall in aid of Downton Moot. There will be a short talk on the Moot first, followed by a meal after which is the quiz - one section will be on the Moot.

Tickets cost £10 and will be available from the Borough Café from early March onwards. More details at downtonmoot.co.uk or look out for posters nearer the time. Teams of up to eight can enter, or make up a team on the night.


DOWNTON HORTICULTURAL SOCIETY

The year starts with two illustrated talks, at the Memorial Hall. The first on Thursday 27 February is on ‘Hillier’s Gardens’ by wildlife photographer and lecturer, John Coombes. The second on Thursday 26 March is by Marcus Dancer on ‘Trees and Shrubs for Winter Colour’.

Marcus runs his own nursery at Sandleheath specialising in Clematis plants, shrubs & perennials.

Both talks start at 7.30pm. Annual membership is £6, and non-members are asked to donate £2 towards costs of the evening.

Jordan & Mason



Jordan & Mason is based in the heart of Salisbury City Centre and has a proud heritage of delivering first class professional property services to clients in the city and throughout the rural communities.

Our Land, Rural, Management and Sales departments are here to provide experience and advice and can be contacted in branch, telephone 01722 441 999 or online jordanshomes.co.uk

4 St Thomas' Square, Salisbury, Wiltshire SP1 1BA
01722 441 999 | info@jordanshomes.co.uk

www.jamesshipton.co.uk

Plans drawn for:

- New Build
- Extensions
- Loft Conversions
- Planning Permission
- Building Regulations

also

Structural Calculations

James Shipton B.Eng(Hons)
Structural Engineer

01725 512065

mail@jamesshipton.co.uk

CHRISTMAS FESTIVAL RAISES OVER £17,000

The Christmas Festival at St Laurence Church raised over £17,000 for the Church and local charities in December. Over two days, the church was often full with visitors and continuous entertainment from a range of groups and bands.

The festival opened with a sung evensong with the Laudamus choir on the Friday evening and there was a concert by the Downton Band in the decorated church on the Saturday evening.



Downton Jubilee Brass and exhibits at the Christmas Festival in December



VACANCIES FOR PARISH COUNCILLORS

There are currently vacancies for Councillors to join Downton Parish Council. Parish Councillors take an active part in running many of the amenities in the village including the play areas, public toilets and recreation grounds. They can also comment on planning applications and support a number of activities.

Parish Council meetings normally take place

on the second Monday of the month in the evening. Meetings are open to the public and so potential members can come and watch and ask questions before deciding to put themselves forward. For an informal conversation call Jane Brentor on 510504 or call the Parish Clerk, Bev Cornish, on 513874. More information at downtonparishcouncil.gov.uk.

Parish Council Surgeries

Downton Parish Council holds monthly surgeries for residents to raise and discuss local issues with councillors in a less formal setting than the monthly Parish Council meeting. Two parish councillors are on hand to meet with residents and the surgeries are normally held on the first Saturday of each month. The next surgeries will be held at the **Memorial Hall**, from 9 am to 10 am on these dates:

Saturday 1 February
Saturday 7 March
Saturday 4 April

Flutterby

Personal Decluttering
& Organisation Services

- 🔑 Domestic & Commercial
- 🔑 Financial Coaching
- 🔑 Bereavement & House moves
- 🔑 Hoarding



FOR MORE INFO CONTACT US ON...

Tel: 07513 858 828

www.flutterbyorganisation.co.uk

SPRING GREEN FAIR: INCORPORATING SEEDY SUNDAY

Downton Green Group are holding a lunch-time fair on Saturday 21 March in the Memorial Hall from 12 - 3pm to showcase some of the green initiatives that are currently taking place in the community, and to give people the chance to join in and help make Downton go green. There will be home-made soup - as well as cakes and drinks.

For gardeners, there will be a range of plants and seeds to swap and to buy: early vegetable and herb seedlings to get the growing season off to a good start, the popular 'seed swap' and the chance to buy small quantities of fresh seeds. Experts will be on hand to advise on gardening sustainably, attracting pollinators, conserving water and making your garden eco-friendly. There will be free starter packs available for children who want to have a go at "growing their own".



Last year's Seedy Sunday

With the following day being Mothers' Day, there will also be planet friendly gifts to buy.

This is also an opportunity to come and find out about some of the many projects that currently contribute to making our community more sustainable including the local recycling 'shed'; the Lover repair cafe; making eco-bricks; the 'plastic free' Downton initiative; the Clothing Exchange; Hale Food Market. There will be plenty of opportunities should you wish to join in - or add new ideas into the mix.

RECYCLING IN DOWNTON

The Green Group is pleased that the mini Recycling Centre at the back of the Baptist Church is being well used. Volunteers regularly move on the various items and keeping the shed tidy, so it would seem that it is a useful initiative in helping to keep rubbish out of landfill.

It really helps the volunteers when people use the shed thoughtfully by placing items in the correct bins and ensuring that everything is clean and dry before being left - particularly empty pet food pouches! On occasion items that are not specifically collected have been left in the shed. For example, batteries can be recycled at any shop that sells them - eg the Co-

The mini-recycling centre



op or the Pharmacy - so there is no bin in the shed for these. Similarly, crisp packets are collected at the Co-op - and plastic trays and foil trays can all go into kerbside recycling. The Green Group's web page has advice on where things should go, but if you're not sure you can contact the group by visiting the Facebook page or emailing contact@downtongreengroup.org.

theboroughcafé

Your local independent cafe.

Employing local people.

Using local suppliers.

Open 7 days a week!

Check the website for opening hours.

www.theboroughcafe.co.uk

70 The Borough tel: 01725 238083

relax@theboroughcafe.co.uk

Charming timber beamed room
available upstairs for meetings.



DOWNTON LINK SCHEME

GOOD NEIGHBOUR VOLUNTEERS
AVAILABLE.

IF YOU NEED HELP WITH TRANSPORT
TO HOSPITAL, THE SURGERY, DENTIST ETC.

There is no charge but Link depends on
donations from those who use the service.

FOR FURTHER INFORMATION PLEASE RING

01725 513807

Mondays to Fridays 9am to 5pm.

COMMUNITY CHOIR

After a busy Christmas season, the choir have taken a well-earned break. Rehearsals start again on Wednesday 22 January, when the choir will start working towards performing at the Cuckoo Fair. The choir meets at the Baptist Church, starting at 7:30pm during the winter months. New members are always welcome - no audition needed. Just turn up and be ready to enjoy singing. More information email [Kate keedgar@aol.com](mailto:Kate.keedgar@aol.com) or visit kateedgarmusic.com



HASH HOUSE HARRIERS – TRAIL MARKINGS AROUND DOWNTON

Last year, readers may have occasionally come across blobs of white flour or little piles of sawdust around the village or its environs. These are trail markings for the Hash House Harriers or “hashers” as they are commonly known and there are groups worldwide with several operating within reach of Downton. It's a sort of paper chase activity where groups of runners and walkers try to follow a trail previously laid by one of them – the hare. It's not a race and not a game, just a fun activity that attracts all ages with as many females as males. Hash routes are legitimately laid over land open to the public, including lanes, tracks, greens, open access land and footpaths. Here hashes help to keep this country's network obscure public footpaths in use and occasional use of

private tracks is with the landowner's permission. Hashes also help to keep pubs in trade so please don't be tempted to obscure the trail markings as it will only divert hashers from their proper route.

Up to 35 regularly turn up on a Wednesday evening for trails laid by the Haunch of Venison Hash House Harriers and Mountain Rescue Club. Trails are in a different location each week, often starting at a pub. Details of upcoming trails can be found at hovmrch3.co.uk/runs/. Anyone who turns up will be made welcome and hashes continue throughout the winter by torchlight in the dark whatever the weather and once you know the form you can search for a hash in many cities worldwide and find a group of like-minded people!

CLOTHING EXCHANGE

The first Clothing Exchange of the New year was held on January 17 - the next few dates will be 14 February, 20 March and 17 April. Come to

the Baptist Church between 2 and 3:45pm. for a chance to spring clean your wardrobe, pick up something new and reduce, reuse, recycle!

the
Borough
dental practice



Welcoming New Patients!

Dentists:- Jenny Wordley BDS
Richard Stephenson BDS
Charlie Killick BDS Msc

To arrange a visit, or book an appointment,
please call: 01725 510303

58 The Borough, Downton, Salisbury SP5 3ND
www.theboroughdentalpractice.co.uk

HAIR ART

THE CITY SALON
IN DOWNTON VILLAGE

Hair Art aim to give clients the best care:
a hairstyle that looks fantastic, and individual
attention to detail.

Cut and blow dry from £30-42

Wet cut from £20-27

Colouring from £37-64



T: 01725 512 690

www.hairartdownton.co.uk

THE HEADLANDS,
DOWNTON, WILTSHIRE
SP5 3HH



Downton Baptist Church
PHOTO COMPETITION
 To raise funds to support the work of PCF on the dumpsites in the Philippines

In support of
PURPLE COMMUNITY FUND

Categories
 Family
 Community
 Respect for our world
 Social Justice

Adults £10
Children £5

DEADLINE
 1st March 2020

EXHIBITION
 8th March 2020

Entries at
downtonbaptist.org
UK Charity:
 1131186

VILLAGE WEBSITE
downtonvillage.co.uk

VILLAGE CHURCHES' REGULAR SERVICES

DOWNTON BAPTIST CHURCH (DBC)

South Lane, Downton SP5 3NA

Sunday Services 10.30am & 6.30pm, Thursdays 11.30am

Ministers: Rev Philip Rhoades & Rev Katy Ulyatt

07468 491143 (out of hours contact number)

Email: rhoades470@btinternet.com

Church Office 01725 512971 office@downtonbaptist.org
downtonbaptist.org

ST LAURENCE PARISH CHURCH

Sunday Services 8am & 10am

Vicar: Rev Frank Gimson,

The Vicarage, Barford Lane, Downton, Salisbury SP5 3QA

01725 510326; vicar@stlaurencedownton.co.uk

stlaurencedownton.co.uk

DOWNTON METHODIST CHURCH

Now Closed

Woodfalls Methodist Church

The Ridge, Woodfalls, Salisbury SP5 2LH

Alternating regular Services on Sundays or Mondays at 10.45am,

More details 01722 421980 (answerphone)

CHURCH OF THE GOOD SHEPHERD (ROMAN CATHOLIC)

Barford Lane, Downton SP5 3QA

No regular Sunday Service

Enquiries: St Osmund's, 95 Exeter Street, Salisbury SP1 2SF

Telephone: 01722 333581; office@salisburycatholics.org

salisburycatholicdeanery.org

WILTSHIRE COUNCIL

Cllr Richard Clewer

53 Highlands Avenue, Whiteparish,
 Salisbury SP5 2SZ

01794 884550

richard.clewer@wiltshire.gov.uk

PARISH COUNCIL

Bev Cornish, Clerk to the Parish
 Council 01725 513874

10am - 3pm Monday - Friday

Surgeries 1st Saturday each month

9am - 10am Memorial Hall

clerk@downtonparishcouncil.gov.uk

downtonparishcouncil.gov.uk

MOBILE POST OFFICE

Fridays

Moot Lane 9am - 10am

The Bull 10.15am - 11.15am

HIGH STREET PHARMACY

Monday to Friday 8.30am - 6pm

(closed for lunch 1-2pm)

Saturday 9am - 12noon

Tel: 01725 510388

CHILD HEALTH CLINIC

2nd and 4th Mondays

Memorial Centre

For families with children up to age 5
 (including antenatal care)

To contact the team call 07976857803
 or 033 33 214 257

LIBRARY

Monday 2pm - 7pm

Tuesday 2pm - 5pm*

Wednesday 2pm - 5pm*

Thursday 10am - 1pm, 1pm - 5pm*

Friday 10am - 5pm

Saturday 10am - 1pm

* volunteer operated sessions

LEISURE CENTRE

Wick Lane

Monday to Thursday 8am - 10pm,

Friday 8am - 9pm, Saturday 9am - 4pm, Sunday 10am - 5pm

01725 513668

downtonleisurecentre.co.uk

MEMORIAL CENTRE

To book hall or meeting rooms
 contact Hilary Mace 07760 415818

email: bookingssecretary@downtonmemorialcentre.co.uk

downtonmemorialcentre.co.uk

Full details see
downtonmemorialcentre.co.uk

What, Where, When

January

Saturday	18	7 for 7:30pm	Downton Movies: Yesterday, Memorial Hall	See page 8
Wednesday	22	6.30pm	Meeting to plan 'Plastic Free Downton', Memorial Centre	See page 3
Saturday	25	10am - 2pm	Memorial Hall Centre Open Day	See page 5
Tuesday	28	2pm	First Rhymetime at Downton Library	See page 2

February

Saturday	1	9am - 10am	Parish Council Surgery, Memorial Hall	See page 10
Saturday	8		DPSA Fundraising evening with Pere Pierre, Primary School	See page 7
Friday	14	2pm	Clothing Exchange, Baptist Church	See page 12
Thursday	27	7.30pm	Horticultural Society Illustrated Talk, Memorial Hall	See page 9

March

Saturday	7	9am - 10am	Parish Council Surgery, Memorial Hall	See page 10
Saturday	14		1920s evening in aid of The Moot and Memorial Centre, Memorial Hall	See page 4
Friday	20	2pm	Clothing Exchange, Baptist Church	See page 12
Saturday	21	12noon - 3pm	Spring Green Fair, Memorial Hall	See page 11
Thursday	26	7.30pm	Horticultural Society Illustrated Talk, Memorial Hall	See page 9
Saturday	28	7pm	Anne of Green Gables, Baptist Church	See page 3

April

Thursday	2	7pm	Anne of Green Gables, Baptist Church	See page 3
Friday	3		Moot Quiz Evening, Memorial Hall	See page 9
Saturday	4	9am - 10am	Parish Council Surgery, Memorial Hall	See page 10



Try TAI CHI

dynamic
vibrant
active



calming
centred
healing

Weds 6.30pm - FREE 1st Class with this advert

Downton Memorial Hall
www.longwataichi.co.uk 01725 514546

TAXI

JCSTAXIS

NOMANSLAND and DOWNTON

Local and Distance
8-Seat and Wheelchair Access

info@jcstaxis.co.uk
(Martin)

01725238719 / 07786036525

Sponsored by Downton Baptist Church
 Website: indownton.org.uk Email: editor@indownton.org.uk
 Twitter @indownton

Next Issue
 Publication date: 28 March 2020
 Email items for inclusion by: 15 March 2020